

Determine Your Blade Hub Type



Standard

Has a screw-on/off thumb nut opposite the blade hub

For all standard 28 mm, 45 mm and 60 mm models



EasyChange™

Has a flip-open handle that removes the magnetic blade hub

For all Easy Change 45 mm and 60 mm models



DuoLoop

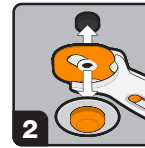
Has 2 EasyChange™ blade hubs with flip-open handles, 45 mm and 60 mm sizes

How to change the blade, or switch between 45 mm and 60 mm blades, on the DuoLoop model (#118730)

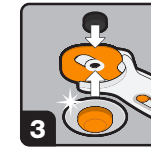
Blade Change Instructions



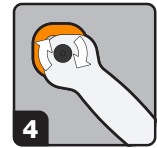
1 Remove thumb nut



2 Hold onto blade hub to remove used blade



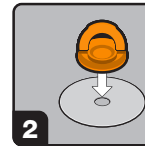
3 Place new blade on blade hub



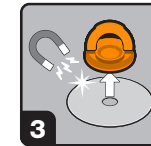
4 Replace thumb nut



1 Flip hub handle up and turn to remove magnetic hub and blade



2 Press hub onto surface (your empty plastic blade tray if available), a spring will release the blade



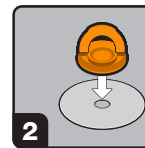
3 Press magnetic hub onto new blade to pick it up



4 Turn using hub handle to secure blade hub to rotary



1 Flip hub handle up and turn to remove magnetic hub and blade



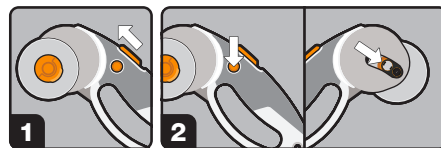
2 Press hub onto surface (your empty plastic blade tray if available), a spring will release the blade



3 Press magnetic blade hub (45 mm or 60 mm) onto corresponding sized blade to pick it up

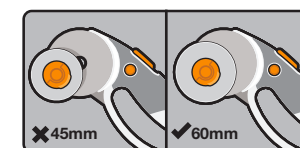


4 Turn using hub handle to secure blade hub to rotary



How to use with 60 mm blade

To fully extend 60 mm blade, hold down blade retraction button while sliding blade extender.



ALERT: Do not hold down blade retraction button while extending 45 mm blade. Doing so will overextend 45 mm blade.